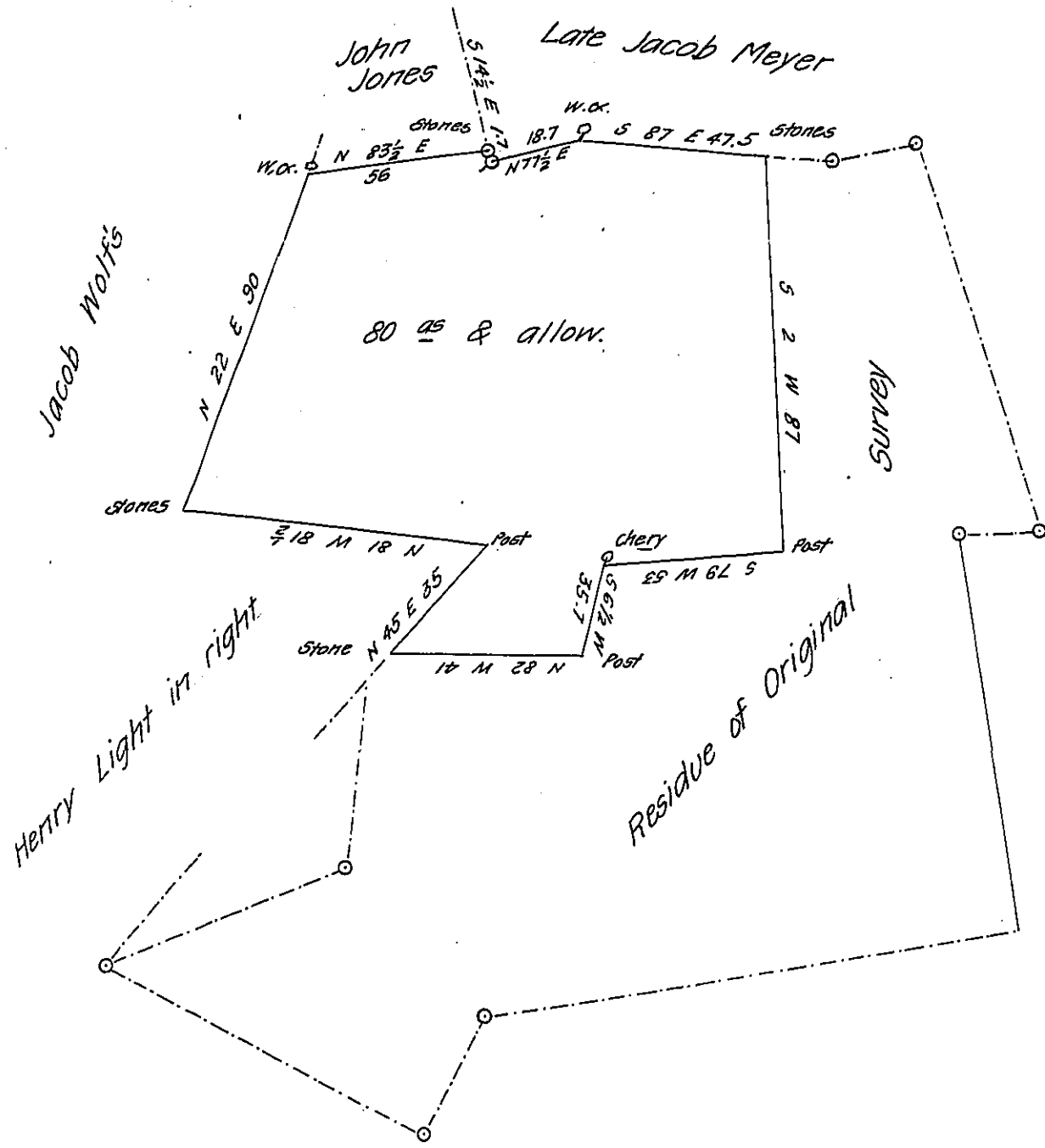


FORM NO 1.



The above described Tract of land Situate in Bethel Township in
 the County of Lebanon Containing eighty acres & the Allowance of 6 P. Cent
 & it being part of 228^{ac} 112 per & allo. & formerly Surveyed on a warrant
 dated the 5th day of June 1761 Granted to Abraham Weidman Survey^d to
 Peter Glick Tob^s Kreider

D. S.

To Jacob Spangler Esq^r
 Surveyor Gen^l

IN TESTIMONY that the above is a copy of the original remaining on file in
 the Department of Internal Affairs of Pennsylvania, made
 conformably to an Act of Assembly approved the 16th day of
 February, 1833, I have hereunto set my Hand and caused
 the Seal of said Department to be affixed at Harrisburg,
 this ninth day of September 1907

Henry Houch
 Secretary of Internal Affairs.